

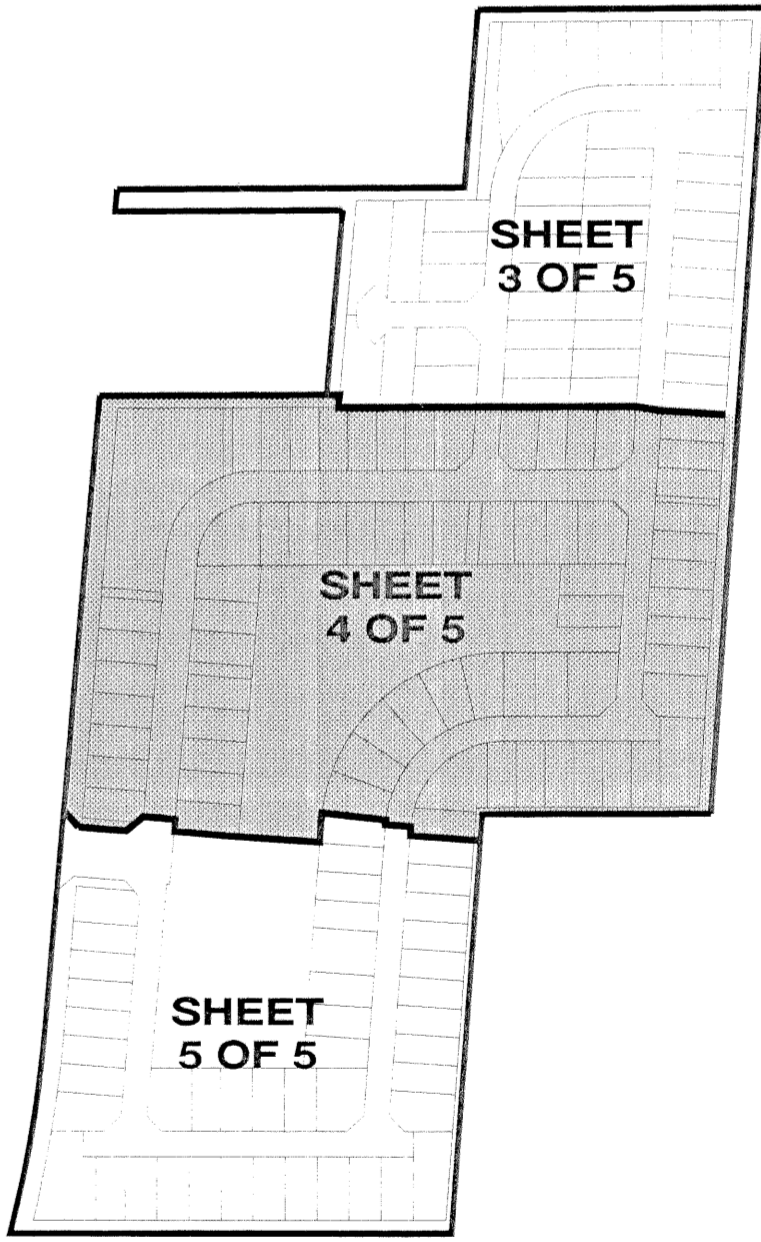
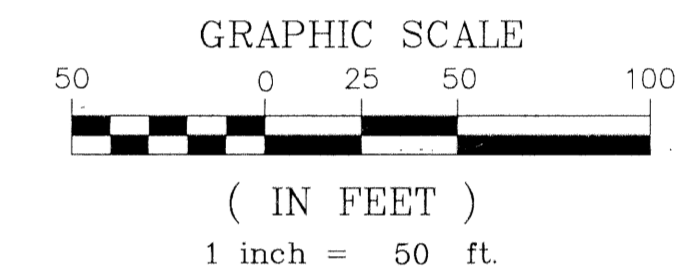
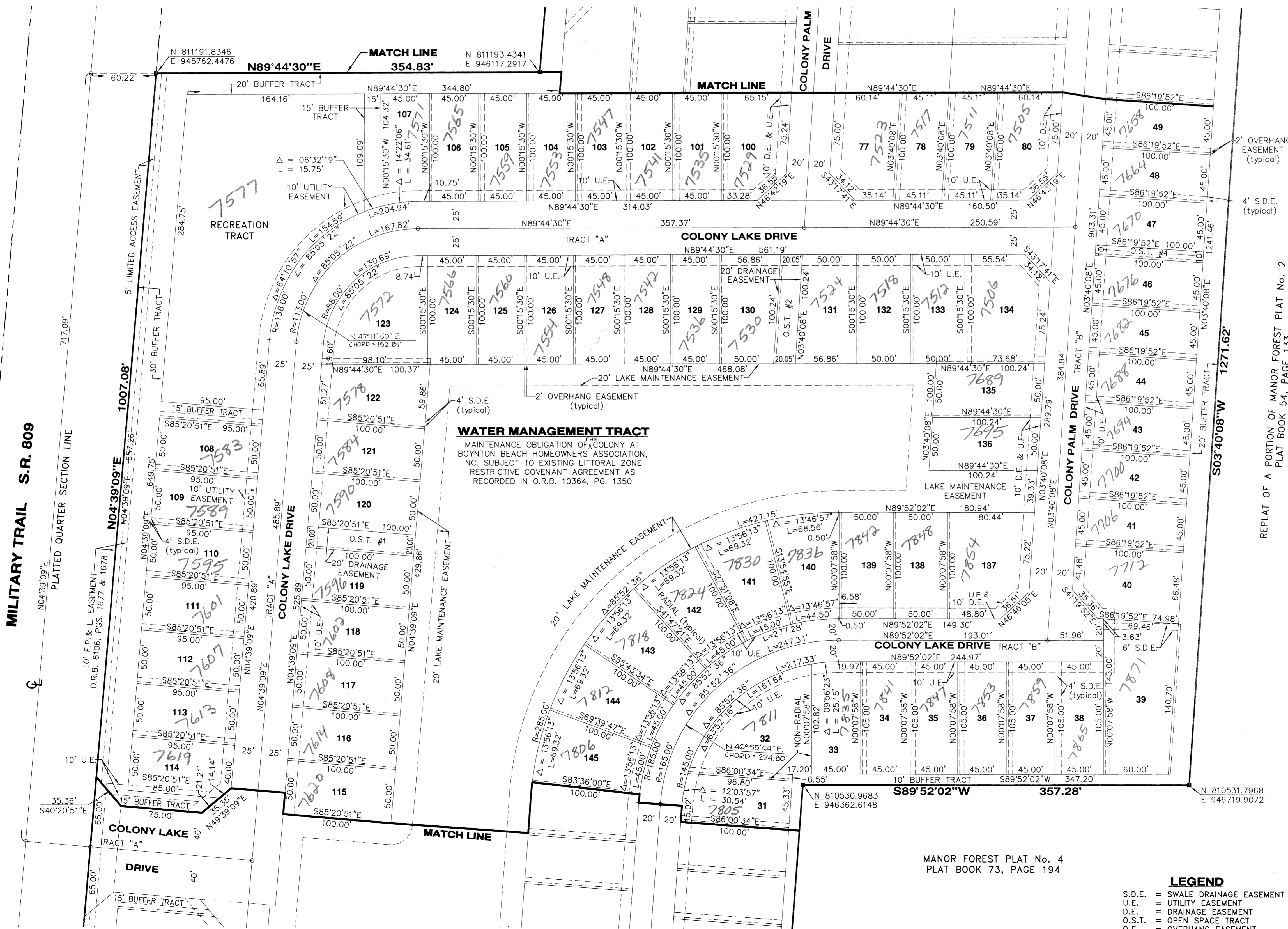
# COLONY AT BOYNTON BEACH

0694-001

114

## A PLANNED UNIT DEVELOPMENT

BEING A REPLAT OF PORTIONS OF TRACTS 5, 6, 7 & 14,  
SOUTHEAST QUARTER (SE 1/4) OF THE  
MARY A. LYMAN ET AL AMENDED PLAT OF  
SECTION 12, TOWNSHIP 45 SOUTH, RANGE 42 EAST  
AS RECORDED IN PLAT BOOK 9, PAGE 74,  
PUBLIC RECORDS OF  
PALM BEACH COUNTY, FLORIDA



REPLAT OF A PORTION OF MANOR FOREST PLAT No. 2  
PLAT BOOK 54, PAGE 135

**WATER MANAGEMENT TRACT**  
MAINTENANCE OBLIGATION OF COLONY AT BOYNTON BEACH HOMEOWNERS ASSOCIATION, INC. SUBJECT TO EXISTING LITTORAL ZONE RESTRICTIVE COVENANT AGREEMENT AS RECORDED IN O.R.B. 10364, PG. 1350

**LAND SURVEYOR'S NOTE:**  
Coordinates shown are grid  
Datum = NAD 83, 1990 Adjustment  
Zone = Florida East  
Linear unit = US Survey Foot  
Coordinate system 1983 State Plane Transverse Mercator Projection  
All distances are ground  
Scale Factor = 1.0003822  
Ground distance x scale factor = grid distance

■ = PERMANENT REFERENCE MONUMENT (P.R.M.)  
STAMPED: "PRM ADAIR & BRADY RLS 3542"  
○ = PERMANENT CONTROL POINT (P.C.P.)  
STAMPED: "PRM ADAIR & BRADY RLS 3542"

MANOR FOREST PLAT No. 4  
PLAT BOOK 73, PAGE 194

**LEGEND**  
S.D.E. = SWALE DRAINAGE EASEMENT  
U.E. = UTILITY EASEMENT  
D.E. = DRAINAGE EASEMENT  
O.S.T. = OPEN SPACE TRACT  
O.E. = OVERHANG EASEMENT

<b>ADAIR &amp; BRADY, INC.</b> CONSULTING ENGINEERS - LAND SURVEYORS 1958 South Congress Avenue West Palm Beach, Florida 33406 (561) 964-1221		<b>COLONY AT BOYNTON BEACH</b>	
Dr. T.C.M.F.B.	Scale: 1" = 50'	FP1849E	SHEET 4 OF 5
Ck. D.P.	Date: AUGUST, 1998		
Ap. D.P.	Job. No. 96022		

Subdivision: Boynton Beach  
Page: 114  
Book: 83  
Flood Zone: E  
Zoning: PD010K  
Quad: 34  
SE 9/4-71  
TAZ: 416  
Pub Name: The Colony

MILITARY TRAIL S.R. 809

♀